



Sonoma Water

SERVING THE COMMUNITY SINCE 1949

West County Water Quality and Recycled Water Supply Feasibility Study

Stakeholder Meeting #2

February 5, 2025

    sonomawater.org



Agenda

1. Opening Remarks
2. Introductions and Agenda Review
3. Presentation: Enhanced Compliance Action (ECA) Overview, and Schedule
4. Presentation: Overview of DRAFT Study Regionalization Alternatives
5. Discussion: Committee Responses to Initial Alternatives
6. Wrap Up/Next Steps
7. ADJOURN



Enhance Compliance Action Overview

*Parastou Hooshialsadat
Sonoma County Water
Agency*



Order No. R1-2023-0049

Settlement Agreement and Stipulation

- Penalties for three violations include:
 - Payment of \$147,001 to the State Water Resources Control Board Cleanup and Abatement Account
 - The remaining \$886,545 in liability will be suspended upon completion of an Enhanced Compliance Action (ECA).



ESA Description

- The ECA project (Project) titled "West County Water Quality and Recycled Water Supply Feasibility Project with Stakeholder Committee" consists of conducting a high-level feasibility study to evaluate potential regional projects that could improve water quality, water supply reliability, Pathogen TMDL compliance, and climate change resiliency in the Russian River watershed, and address ratepayer costs for West County wastewater systems by exploring the cost savings of regionalization.



ECA Objectives and Deliverables

- This ECA project will investigate creating regional wastewater treatment and reuse systems for more reliable and cost-effective services, study water recycling systems and pipelines, survey wastewater connection and consolidation opportunities for onsite wastewater treatment systems and explore employing increased climate change resiliency.
- The primary deliverable will be a Final Feasibility Study Report with data needed to make informed decisions for a future of resiliency supporting long-term improvements and short-term pathogen TMDL implementation.



DRAFT Regionalization Alternatives Overview

Kathryn Geis, West Yost



Scope Overview

- Wastewater Regionalization Evaluation
 - Facilities Evaluated:
 - Russian River County Sanitation District (RRCSD)
 - Graton Community Services District (GCSD)
 - Forestville Water District (FWD)
 - Occidental County Sanitation District (OCSD)
 - Regional Strategies Alternatives Development  **We are here**
- Pathogen TMDL Compliance/Unsewered Community Evaluation
- Increased Recycled Water Supply Evaluation
- Increased Climate Change Resiliency

Regionalization Scenario Categories

1

Local Facility Scenarios
(3 Scenarios)

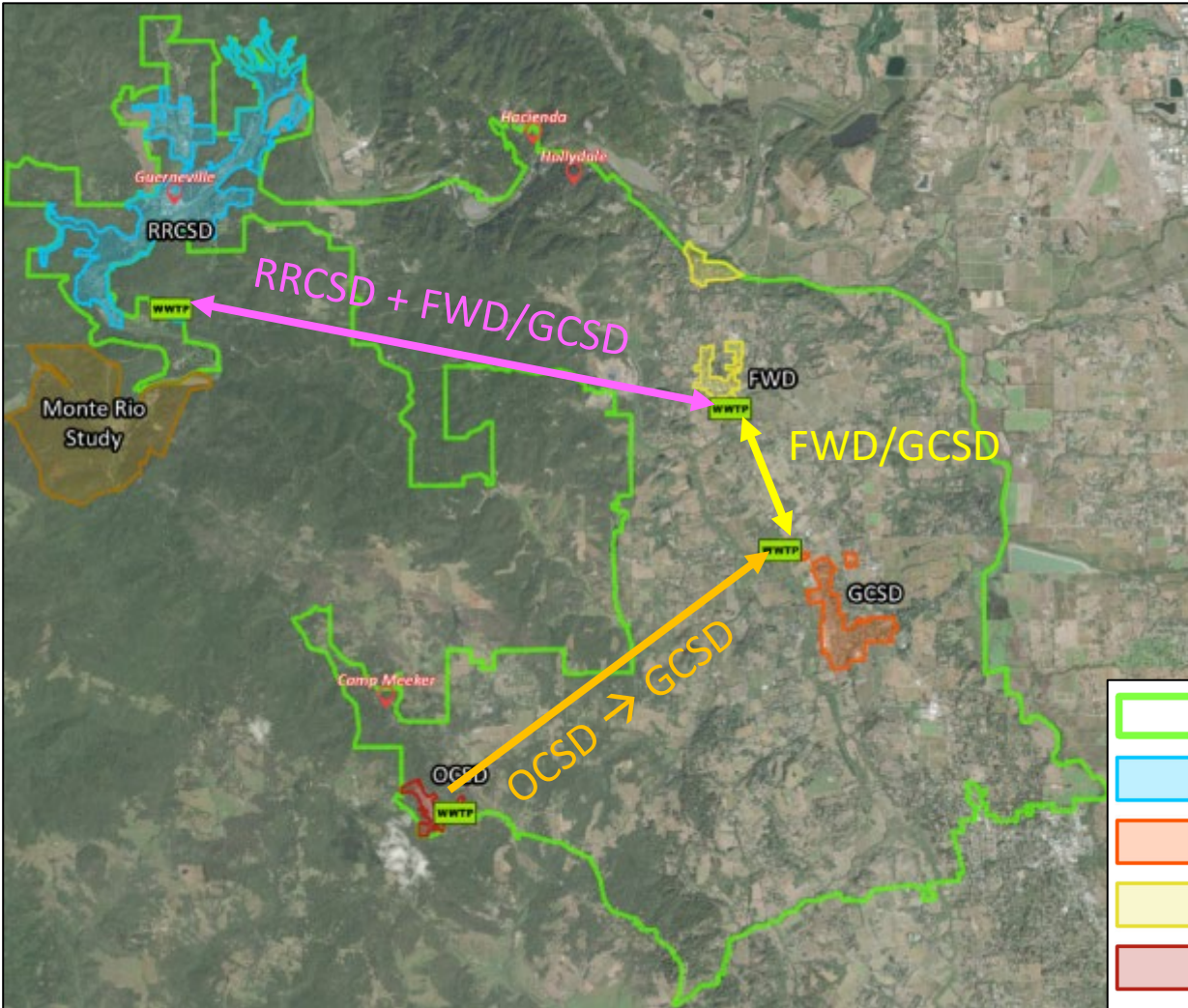
2

Export Scenarios
(3 Scenarios)

3

Combination Scenarios
(2 Scenarios)

1 Local Facility Scenarios

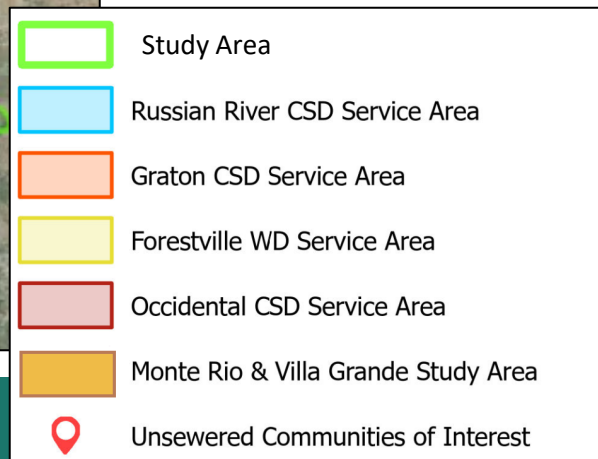


1a. Two Separate Regional Facilities:

- Russian River County Sanitation District (RRCSD) + Monte Rio Facility
- Forestville Water District (FWD)/Graton County Sanitation District (GCSD) Facility

1b. One Regional Facility at RRCSD

1c. One Regional Facility at FWD/GCSD



2 Export Scenarios

2a. Export to the Windsor WWTP:

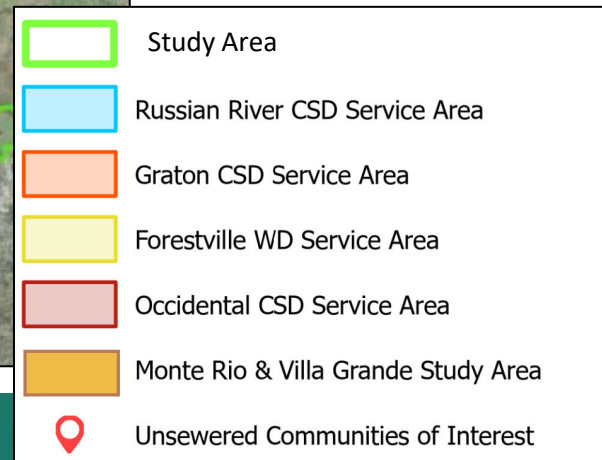
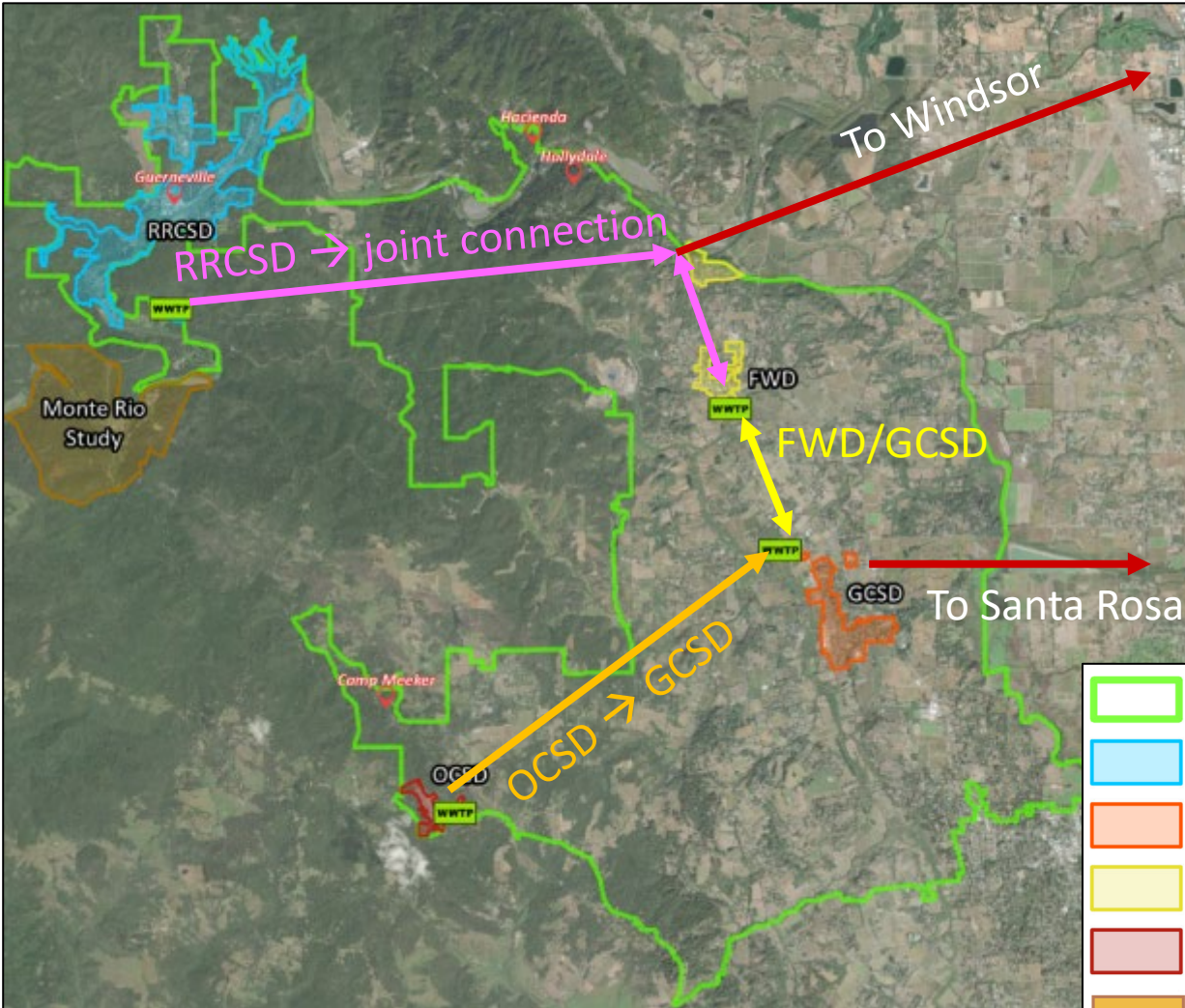
- All 4 facilities + Monte Rio/Villa Grande

2b. Export to the Santa Rosa WWTP:

- All 4 facilities + Monte Rio/Villa Grande

2c. Export to Both Agencies:

- RRCSD + Monte Rio/Villa Grande to Windsor WWTP
- FWD, GCSD and OCSD to Santa Rosa WWTP



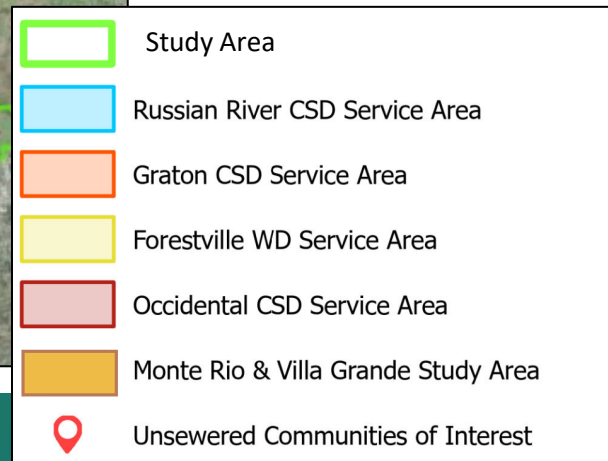
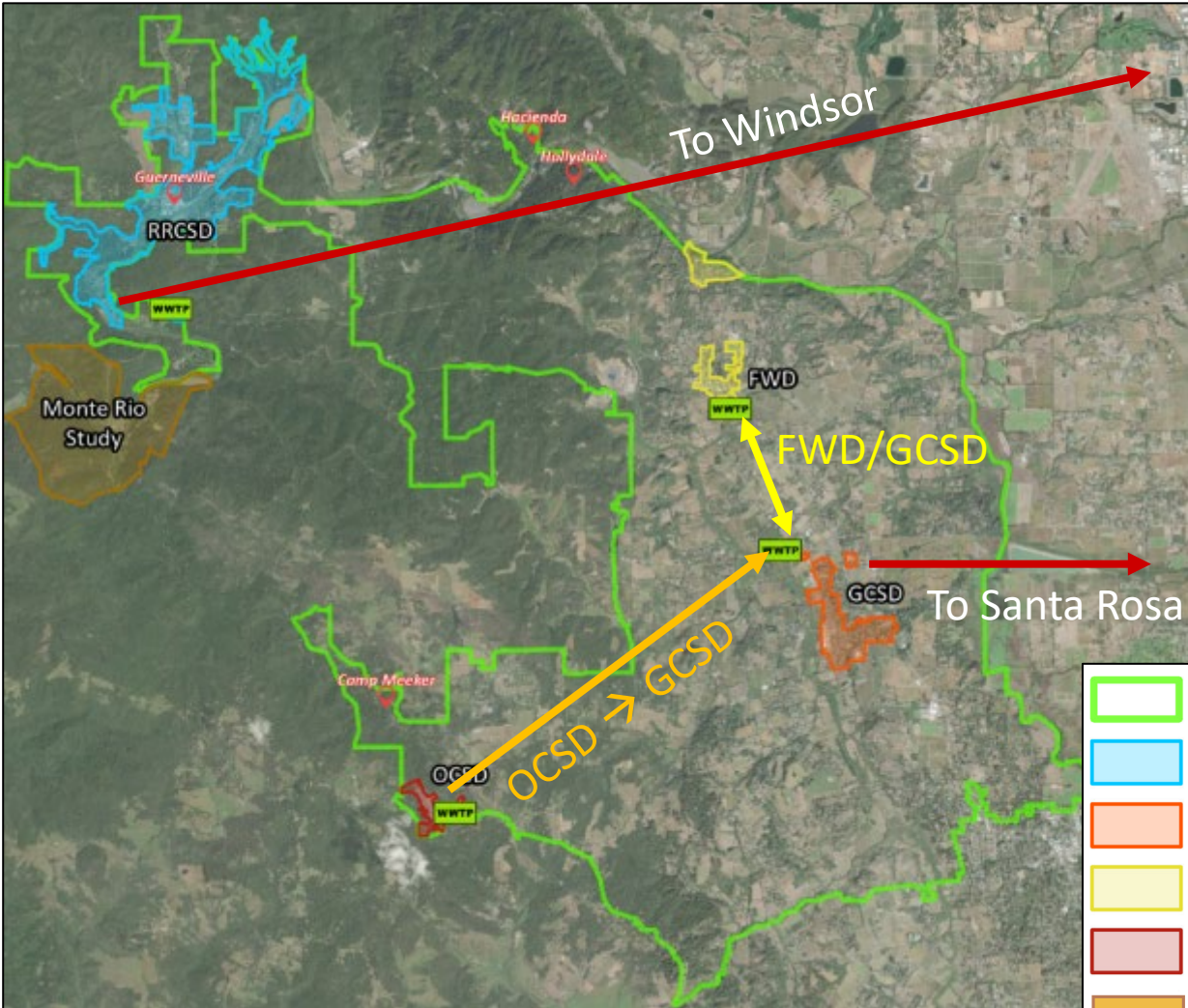
3 Combination Scenarios

3a. Local RRCSD and Export to Santa Rosa:

- RRCSD + Monte Rio/Villa Grande Local Facility
- FWD, GCSD and OCSD to Santa Rosa WWTP

3b. Local GCSD/FWD and Export to Windsor:

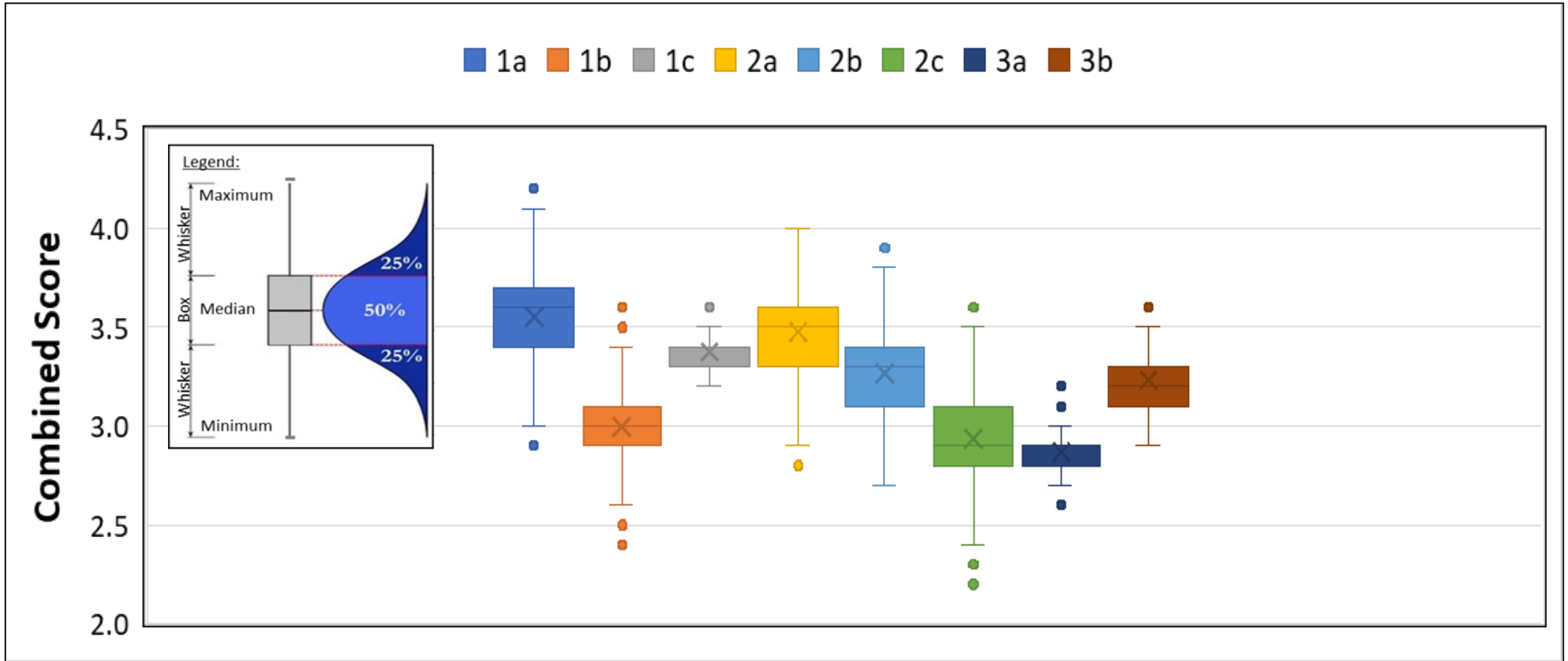
- FWD, GCSD and OCSD Local Facility
- RRCSD + Monte Rio/Villa Grande to Windsor WWTP



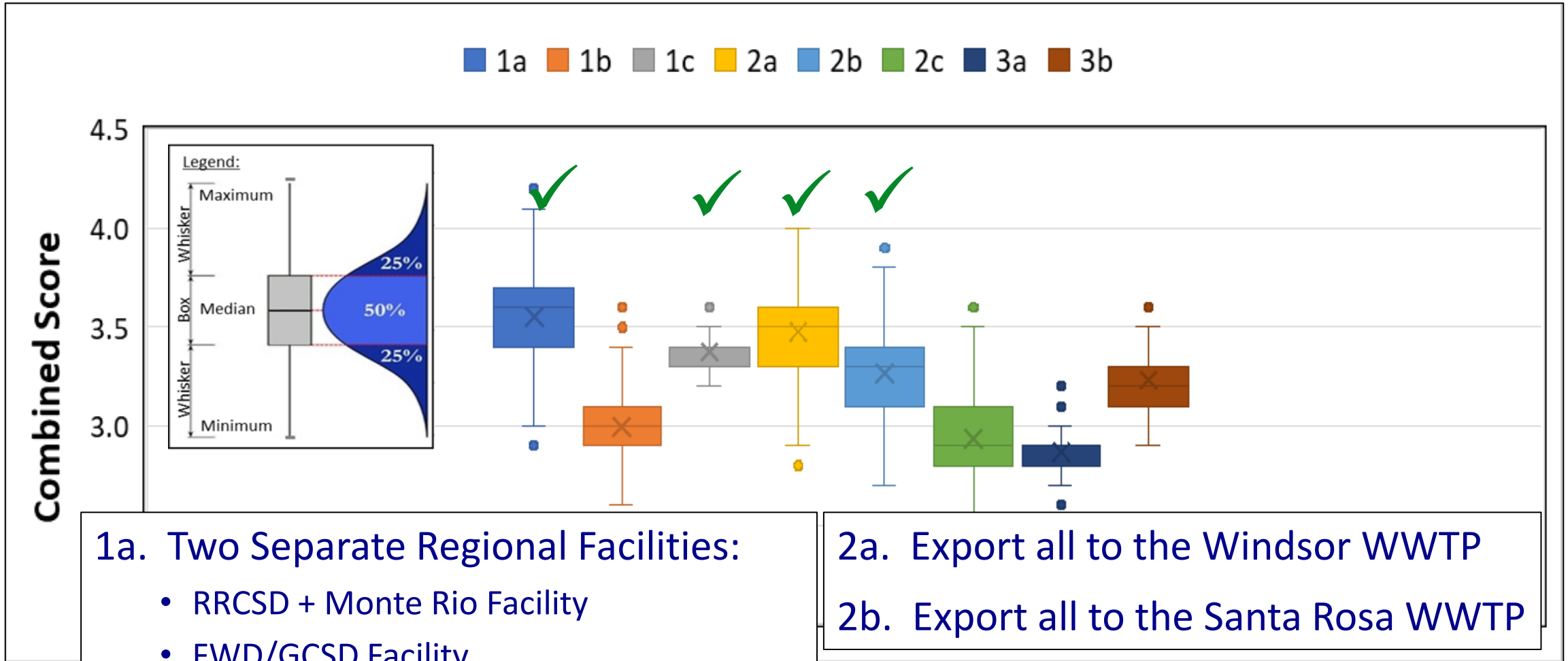
Scoring Categories

Criteria	Description
Capital Cost	Developed based on extent of needed treatment facility improvements, conveyance pipelines and recycled water conveyance infrastructure.
Reliability/Ease of Operation	Does the alternative entail a long-term reliable treatment solution for meeting effluent quality requirements? Are the proposed infrastructure components relatively simple to operate and maintain for the West County agencies?
Flexibility for Adding Unsewered Communities	To what extent does the proposed alignment allow for connections to unsewered, disadvantaged communities of interest (Hacienda, Hollydale and Camp Meeker)?
Recycled Water Opportunities	Does the alternative support West County recycled water opportunities?
Environmental	Is there potential for impacts to floodplains, wetlands, endangered species, historical and archaeological properties? Are efforts associated with handling wastes minimized? Is alternative energy efficient and/or minimize power usage?
Resiliency	Is the proposed or retained infrastructure vulnerable to flooding, climate change and/or seismic impacts?
Ease of Implementation	Would the project construction be relatively simple, with regard to both treatment improvements and pipelines? What level of governance structure and agency coordination would be required?

Scoring of Alternatives



Scoring of Alternatives

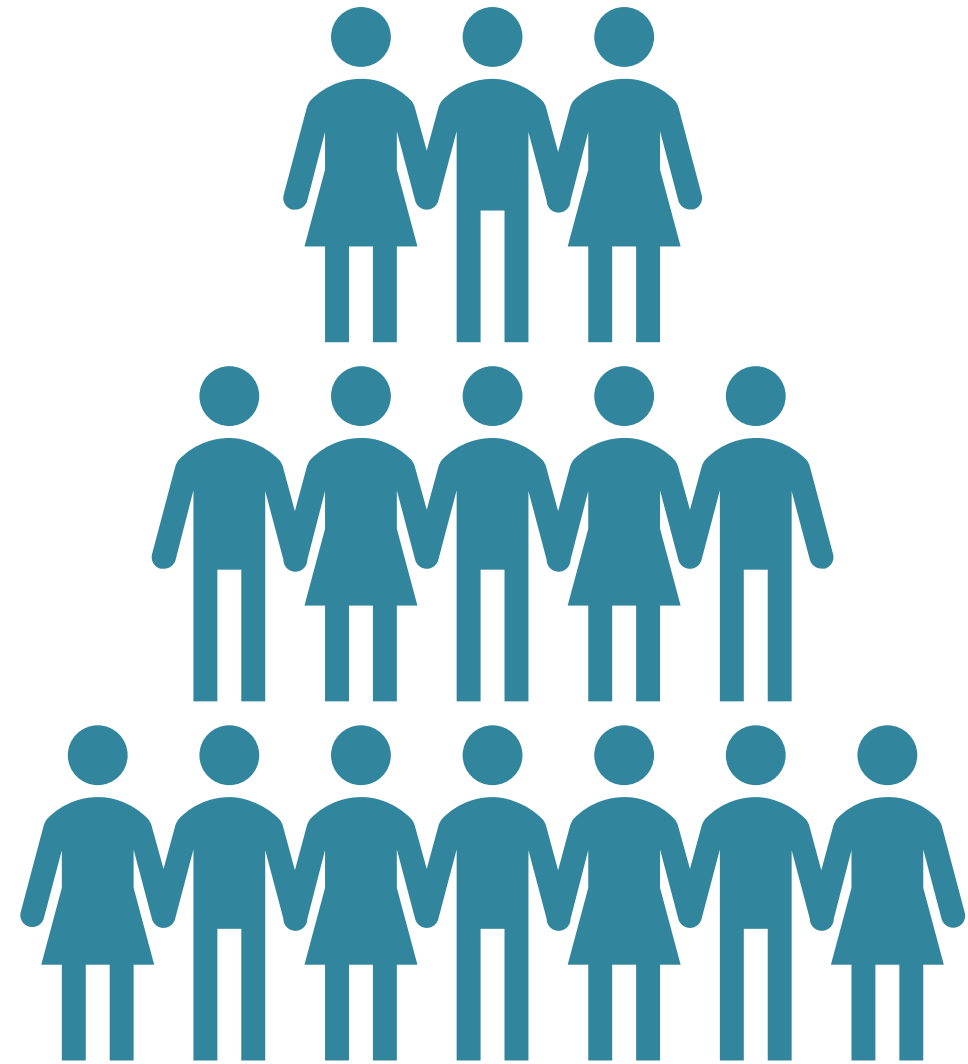


Next Steps for Regionalization Evaluation

- For each of the 4 preferred alternatives:
 - Treatment facility and conveyance pipeline layouts
 - Planning-level lifecycle cost estimates (capital and operating costs over project lifetime)
- At next technical advisory committee meeting, choose one Selected Alternative to evaluate in further detail for remaining items of interest:
 - ability to serve unsewered parcels
 - increased recycled water supply
 - resiliency to climate change (drought, flooding)

Discussion: Committee Responses to DRAFT Regionalization Alternatives

All Stakeholder Committee Participants



Regionalization Alternatives: Questions for Consideration

- What questions do you have about the qualitative criteria?
- What's missing?
- What works?
- What gives you concern?
- What might be missing?

Regionalization Alternatives: Poll

- Which of the alternatives resonates with you?
- Why?



Thank you!

Project Manager/Engineering Lead:

Parastou Hooshialsadat

parastou.hooshialsadat@scwa.ca.gov

**Outreach and Communications
Lead:**

Andrea Rodriguez

andrea.rodriquez@scwa.ca.gov

Committee Facilitator:

Sam Magill

s.magill@csus.edu

Project Website: <https://www.sonomawater.org/westcountystudy>





Sonoma Water

SERVING THE COMMUNITY SINCE 1949



sonomawater.org